

This document will help you understand drivers of American Canyon's energy usage and the ways the community and PG&E are partnering to decrease energy consumption.

Overall energy usage

This is the breakdown between **Non-Residential** and **Residential** energy usage in 2013 for American Canyon.

898,849

million British thermal units in 2013*

Energy usage has changed by **28.0%** since 2005

This is the Year over Year change in overall energy usage from the prior year

*Consumption has been converted to British thermal units (Btu) to compare electricity and natural gas usage

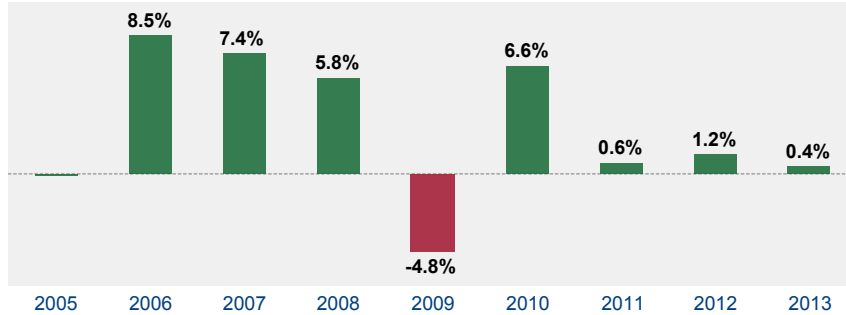
Non-Residential

56%

Residential

44%

2005 Baseline 702,378 MBtu



5,787,538

Therms in 2013

64%

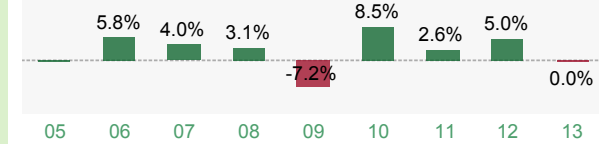
of energy usage*

54%

46%

Natural Gas Usage has changed by **23.3%** since 2005

2005 Baseline 4,695,330 Therms



93,814,621

kWh in 2013

36%

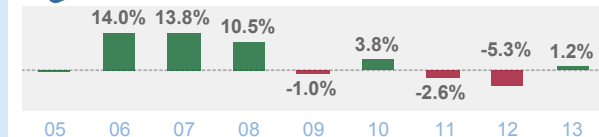
of energy usage*

59%

41%

Electricity usage has changed by **37.5%** since 2005

2005 Baseline 68,242,899 kWh



CO2 Emissions from energy usage changed by 29.7% since 2005

51,948 MTCO2

GHG emissions from energy usage in American Canyon 2013

56%

46%

4,537 MTCO2 Avoided since 2006 through PG&E programs

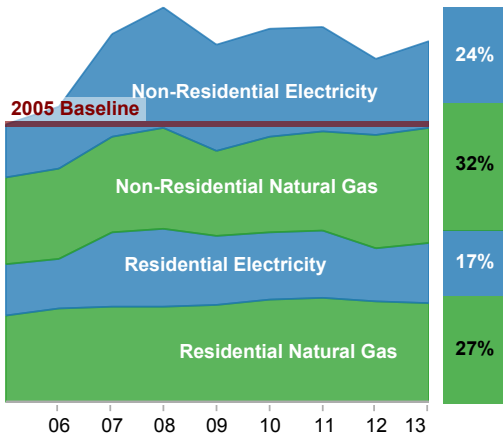
equivalent to **757 cars off the road for one year**

Non-Residential Programs **642.9** 3,851 MTCO2

Residential Programs **27.0** 162 MTCO2

Through Manufacturers and Distributors **87.6** 524 MTCO2

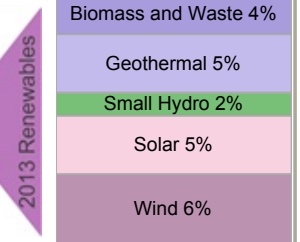
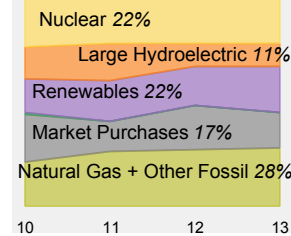
Energy Related Emissions



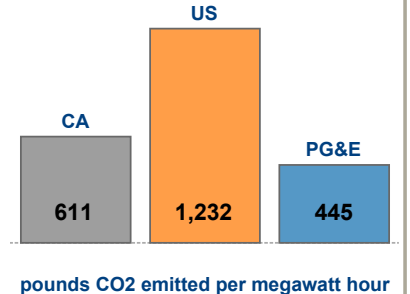
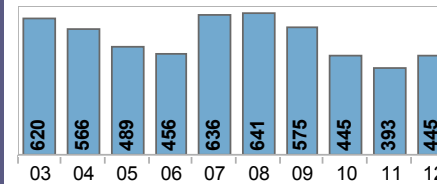
Pacific Gas and Electric

Where Electricity Comes From

PG&E's delivers some of the cleanest electric power in the nation. Here's how we did it in 2013



PG&E's average emissions from delivered electricity was less than half the U.S. Average in 2012 (shown in lbs CO2 per MWh)



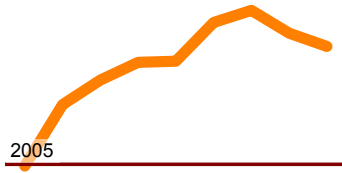


Residential Energy

Usage

44%

of community energy usage (Btu) is from residential customers



33%



67%



Averages

Averages

Monthly Household Averages in 2013



Multi Family	401 kWh per month	-0.4% since 2005
Single Family	541 kWh per month	-3.8% since 2005

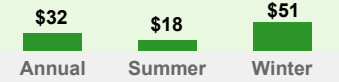
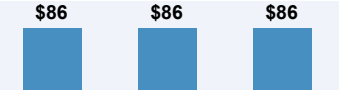


Multi Family	39 therms per month	-4.8% since 2005
Single Family	38 therms per month	-3.7% since 2005

Climate Zone Average: 582 kWh

Climate Zone Average: 41 therms

By Season



Climate Zone 02

Average Monthly Bill

Renewables

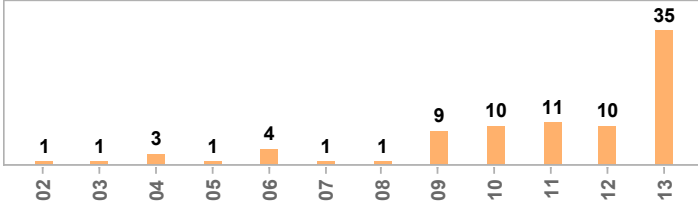
Photovoltaics



315 kW

CEC AC Capacity

Residential sites interconnected to the PG&E grid 02 to 13



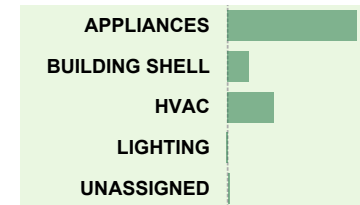
Energy Efficiency

162 MTCO2

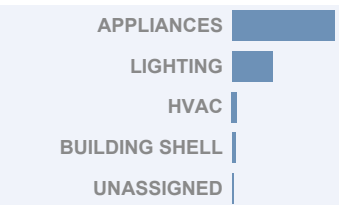
Annual avoided emissions since 2006 through PG&E programs



21,000 Therms Saved



275,000 kWh Saved



Non-Residential Energy Usage

56%

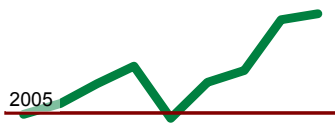
of American Canyon energy usage (Btu) is from non-residential customers



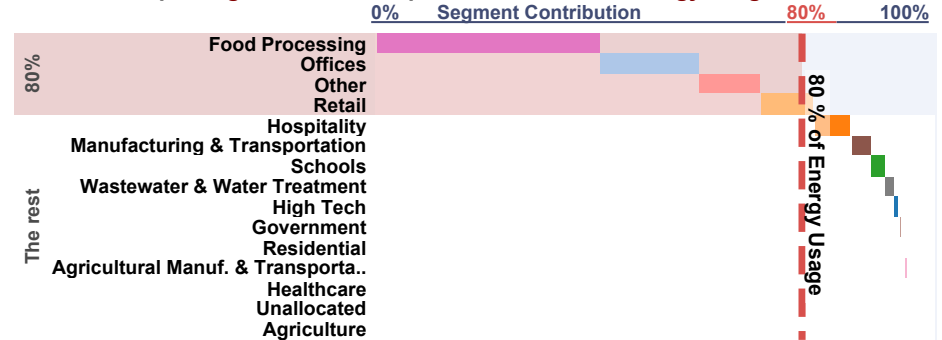
38%



62%



The top 4 Segments were responsible for 80% of energy usage in 2013



Renewables

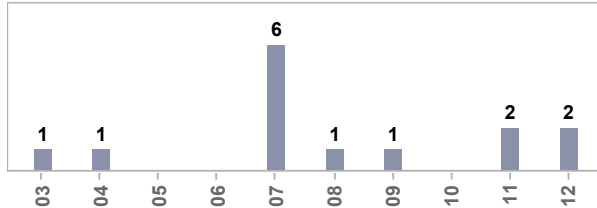
Photovoltaics



2,291 kW

CEC AC Capacity

Sites Interconnected to the PG&E grid 03 to 12



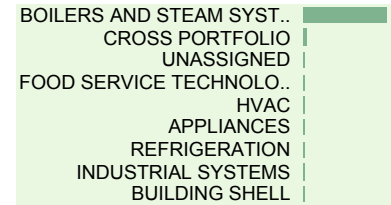
Energy Efficiency

3,851 MTCO2

Annual avoided emissions since 2006 through PG&E programs



53,000 Therms Saved



14,907,000 kWh Saved

